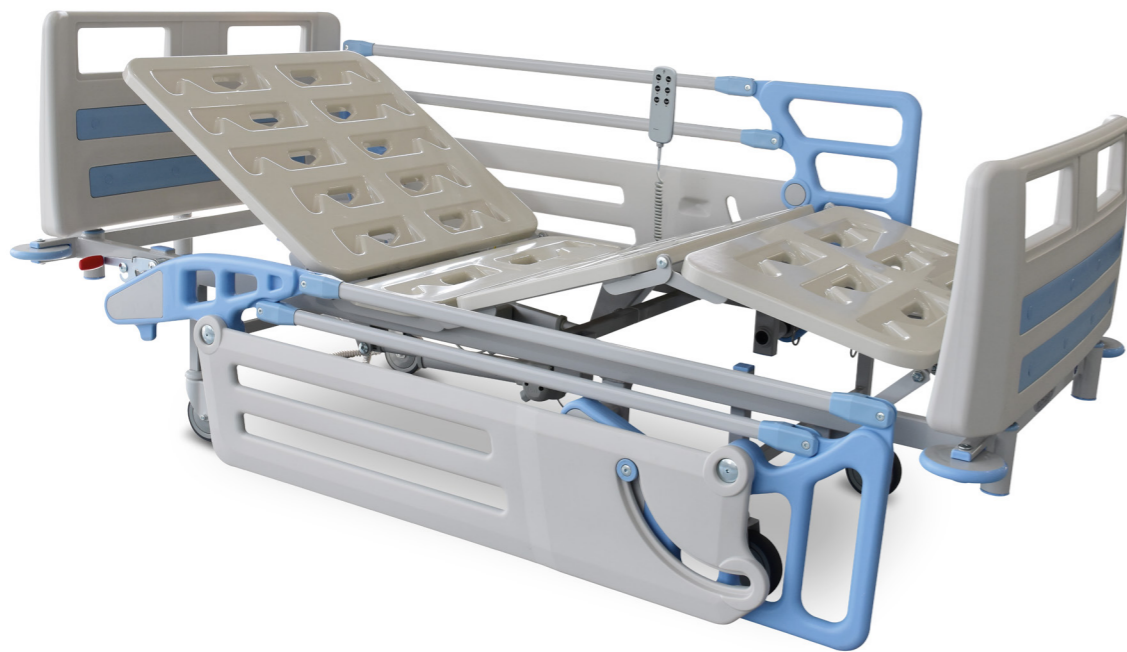


Technical Specifications



● Overall dimensions	_____ 2260 mm × 1010 mm
● Mattress platform	_____ 2000 mm × 810 mm
● Height	_____ 440 mm
● Side rail height	_____ 410 mm
● Side rail length	_____ 1620 mm
● Backrest angle	_____ 0 - 85°
● Kneerest angle	_____ 0 - 30°
● Bed weight	_____ 110 kg
● Safe working load	_____ 220 kg
● Casters	_____ 125 mm
Power input max	_____ 250 VA
Main power system	_____ 220 V-50 Hz, 24V DC
Electrical current protection	_____ Class 1
Electrical shock protection	_____ Type B
Operation mod	_____ 10%, max.: 2 min./18 min.
IP rating	_____ IP 66






Technical and Quality Assurance Standards
 IEC 60601-1
 IEC 60601-2-52
 ISO 13485
 ISO 14971

Piyatech

General Bed 25000EC1 Type 2



Piyatech 2023-25000EC1 Type 2, V01 Validity Dec. 2024

- 
IV Stand
- 
Lifting Pole
- 
Urine Bag
- 
Traction Bar
- 
IP 66

Positions



Piyatech Sdn. Bhd.
 B3-U5-7, Solaris Dutamas, Jalan Dutamas 1,
 50480 Kuala Lumpur, Malaysia
 Tel: (+60 3) 62113120, 62112120, 62112120
 www.piyatech.com
 email: info@piyatech.com

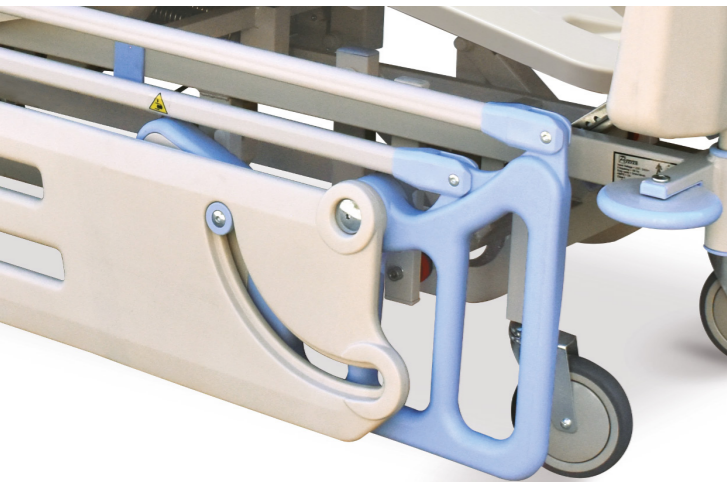


To improve products, Piyatech Sdn. Bhd. reserves the right to make changes without notice in design, specifications, and models.

MDA Establishment License No.: MDA-1216-K120
 MDA Product Reg. No.: GMD45614744918A



Features



Side Rails

The parallel side rails of the 35000MC1 offer a unique and stylish design produced from a combination of blow molded plastic and steel bars to provide a protective height and length. The side rails adhere to the highest standards of safety to prevent patient falls and entrapment.



Side Rails

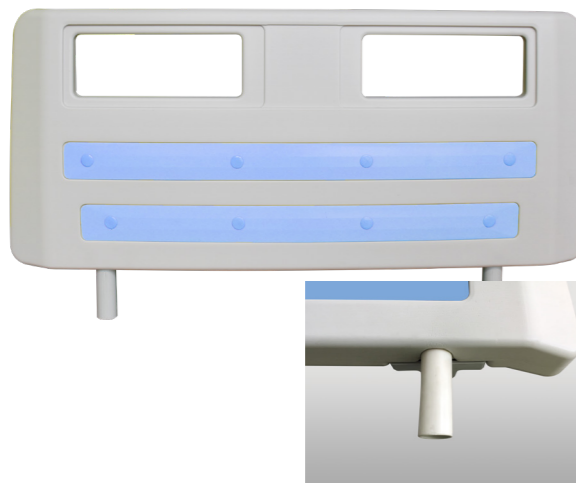
Locking Mechanism

Pushing up the red lever on either side of the bed engages the release mechanism allowing the side rails to fold down.



Handset Control

User-friendly handset controller with illustrative schematics make it simple and easy for the patient and caregiver to adjust the bed with different positions. The handset controller can be placed on both side rails for easy access. As the controller has IP66 rating, it is resistant against dust and water.



Bed Ends

The seamless blow-molded bed ends are lightweight, durable, and easy to clean. The bed ends are of high quality and compatible with steam cleaning. To have better access to the patient's head in emergency cases, the caregiver can easily remove the bed ends by grasping the hand holds and lifting them up in one single step. Moreover, the bed ends have integrated steel fittings which make them extremely strong so the nursing staff can move the bed by holding and pushing them without worries.



Casters

125 mm casters run extremely smoothly; the quality that makes it significantly easy for the nursing staff to transport the bed in the medical centers. Having diagonal locks, the casters can be locked to prevent the bed from unintended movement.



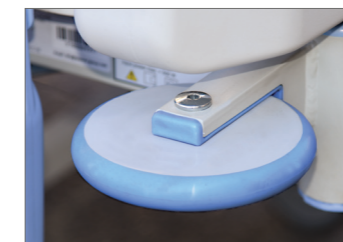
Mattress Platforms

The mattress platforms exhibit exceptional qualities, including smooth surfaces, high durability, and effortless removal for easy cleaning and disinfection. Additionally, the mattress platforms are designed to be compatible with steam cleaning, ensuring thorough and effective sanitation.



Actuators

This bed effortlessly transitions into various positions, thanks to its robust, dependable, and low-noise actuators. With an IP66 rating, the actuators are safeguarded against dust and water, making cleaning and disinfection a hassle-free task in medical centers. This notable feature ensures the bed can be regularly maintained to meet stringent hygiene standards.



Bumpers

Innovative rotary bumpers which are located on four corners of beds can prevent to a large extent the damages that may cause collision of the bed to the surroundings during transportation.



Urine Bag Holder

Beds are equipped with a urine bag holder which can be easily installed on either side of the bed.